

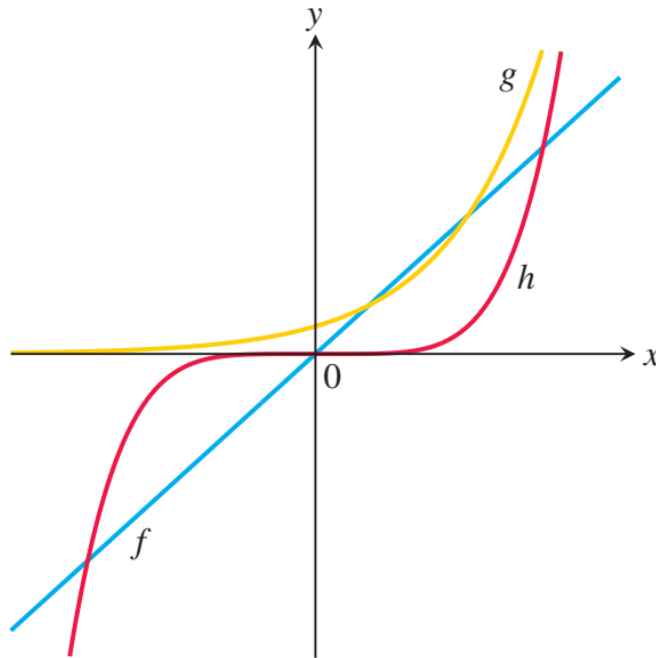
Exercise 70

In Exercises 69 and 70, match each equation with its graph. Do not use a graphing device, and give reasons for your answer.

a. $y = 5x$

b. $y = 5^x$

c. $y = x^5$



Solution

- a.** f is $y = 5x$ because the graph is linear.
- b.** g is $y = 5^x$ because the graph is exponential.
- c.** h is $y = x^5$ because the graph is a polynomial function.